

COME **SKI** WITH THE

WORLD

FEBRUARY 13-15



**GATINEAU
LOPPET**
WORLDLOPPET



Québec

OUTAOUAIS



OTTO'S SUBARU

OTTO'S

Desjardins



HÔTEL & RESORT
Château
Cartier

CHELSEA
& CO



SALOMON

SWIX

FISCHER

Julbo

CRAFT

F.I.S.

PARC DE POND
QUÉBEC

ENONE

nordiq

XACT

Table des matières

PRESIDENT'S MESSAGE.....	3
MESSAGE FROM THE EXECUTIVE DIRECTOR.....	4
SPONSORS	5
WEEKEND AT-A-GLANCE SCHEDULE.....	7
COMPETITION SITE PLAN.....	8
HOW TO GET TO THE COMPETITION SITE:	8
MONT-BLEU HIGH SCHOOL PLAN.....	9
RACE SCHEDULE:	11
FUNDAMENTAL RULES	11
TIMING CHIP	13
BIB.....	13
BROKEN POLES	14
RESULTS.....	14
WAXING.....	15
SKIER BAGS	15
FIRST AID.....	16
RESTROOMS	17
WORLDLOPPET PASSPORT	17
WORLDLOPPET COCKTAIL	18
WORLDLOPPET MASTERS.....	18
MEALS.....	18
MEDAL CEREMONY.....	19
SKIER PINS.....	19
SUSTAINABLE DEVELOPMENT	19
SAFE SPORT.....	20
COURSES.....	23

PRESIDENT'S MESSAGE



Dear Participants,

Can you feel the electricity in the air? The heartbeats of thousands of skiers from around the world are resonating, ready for the grand start of our legendary Gatineau Loppet—the only Canadian stop on the Worldloppet circuit.

Our volunteers are ready, and I invite you to join them and become, yourselves, the architects of the unique atmosphere that defines the Gatineau Loppet. A shared smile at the start line, a breathless word of encouragement on a climb, or a warm greeting at the ski expo, the post-race meal, or elsewhere on site will leave a lasting impression on the participants you encounter.

On this Valentine's Day weekend, let us take the opportunity to show our love for our beloved Gatineau Loppet, for cross-country skiing, and for our dedicated volunteers—but also for unity and peace in the world. Seeing skiers from some twenty nations gliding side by side on pristine snow, along the trails of the majestic Gatineau Park, is a profoundly positive, symbolic, and inspiring image. More than that, it is a true anthem to peace.

On behalf of the Board of Directors, the organizing team, and the volunteers, thank you for taking part in this 48th edition. To our visitors, we wish you a memorable stay in Gatineau. To everyone—have a great time!

Philippe Lebel
President
Board of Directors, Gatineau Loppet



MESSAGE FROM THE EXECUTIVE DIRECTOR



Dear Skiers,

On behalf of the entire Gatineau Loppet team, I would like to sincerely thank you for being here in such great numbers. Your presence, passion, and energy make this event a unique and inspiring experience year after year.

I would also like to express my heartfelt appreciation to the members of the organizing committee, whose dedication and professionalism make this event possible, as well as to our incredible volunteers—the true backbone of the Gatineau Loppet. Without you, none of this would be achievable.

To all participants, I wish you the best of luck in your respective events. Whether you are taking on a personal challenge, striving for performance, or simply enjoying the pleasure of skiing, make the most of every kilometer.

Have a great race and an outstanding Gatineau Loppet to all!

Jérôme Poulin
Executive Director
Gatineau Loppet

SPONSORS

OUTAOUAIS

tourismeoutaouais.com



CCN
NCC | Parc de la Gatineau
Gatineau Park





SKI DE FOND
QUÉBEC

WORLDLOPPET



HÔTEL & RESORT
**Château
Cartier**

CHELSEA & C^o
MICROBRASSERIE



EAU DE SOURCE NATURELLE • NATURAL SPRING WATER
amaro
L'EAU D'ICI • OUR WATER

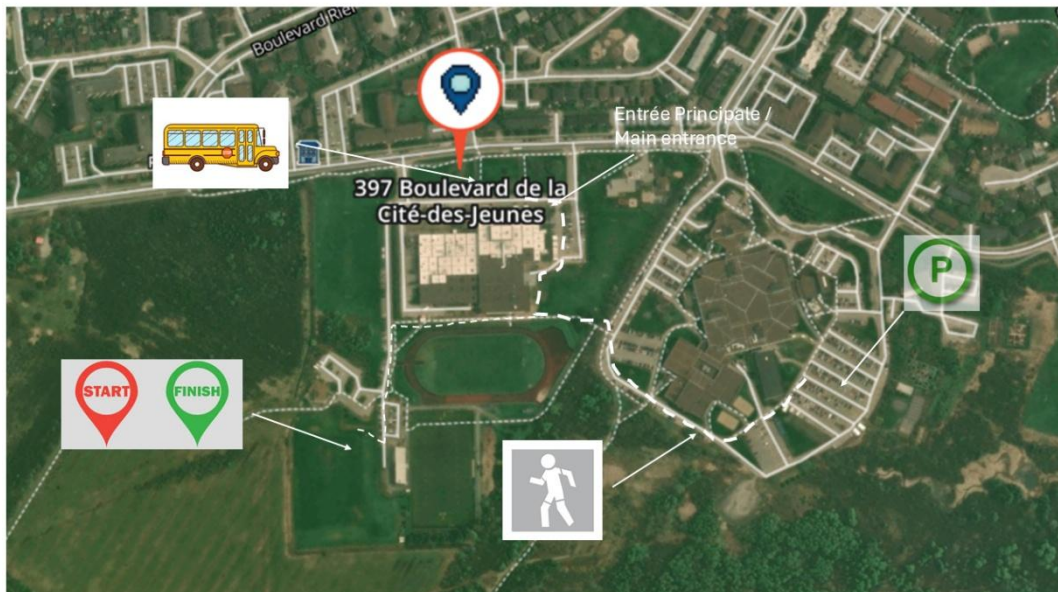
WEEKEND AT-A-GLANCE SCHEDULE

Competition Site Schedule

	Friday	Saturday	Sunday
Site Opening	5 :00 p.m.	7 :00 a.m.	7 :00 a.m.
Race Kit Pick-up	5 :00 p.m. - 9 :00 p.m.	7 :00 a.m. - 3 :00 p.m.	7 :00 a.m. - 1 :30 p.m.
Ski Expo	5 :00 p.m. - 9 :00 p.m.	7 :00 a.m. - 4 :00 p.m.	7 :00 a.m. - 4 :00 p.m.
Site Closure	9 :00 p.m.	5 :00 p.m.	5 :00 p.m.

	SATURDAY FEBRUARY 14 TH 2026 CLASSICAL TECHNIQUE	SATURDAY FEBRUARY 14 TH 2026 DISCOVERY WAVE		SUNDAY FEBRUARY 15 TH 2026 FREE TECHNIQUE	SUNDAY FEBRUARY 15 TH 2026 DISCOVERY WAVE
50 KM	► A WAVE: 9:00 a.m. ► B WAVE: 9:04 a.m. ► C WAVE: 9:08 a.m. ► D WAVE: 9:12 a.m.	9:16 a.m. – 9:21 a.m.	50 KM	► A WAVE: 9:00 a.m. ► B WAVE: 9:04 a.m. ► C WAVE: 9:08 a.m. ► D WAVE: 9:12 a.m.	9:16 a.m. à 9:21 a.m.
27 KM	► A WAVE: 9:00 a.m. ► B WAVE: 9:04 a.m. ► C WAVE: 9:08 a.m.	9:12 a.m. – 9:17 a.m.	27 KM	► A WAVE: 9:00 a.m. ► B WAVE: 9:04 a.m. ► C WAVE: 9:08 a.m.	9:12 a.m. – 9:17 a.m.
15 KM	► A WAVE: 1:00 p.m. ► B WAVE: 1:04 p.m. ► C WAVE: 1:08 p.m.	1:12 p.m. - 1:17 p.m.	10 KM	► A WAVE: 13h00 ► B WAVE: 13:04 ► C WAVE: 13:08	1:12 p.m. à 1:17 p.m.
5 KM	► A WAVE: 1:30 p.m. ► B WAVE: 1:34 p.m.	1:38 p.m. - 1:43 p.m.	5 KM	► A WAVE: 13:30 ► B WAVE: 13:34	1:38 p.m. – 1:43 p.m.
			2 KM	12:00 p.m.	

COMPETITION SITE PLAN



HOW TO GET TO THE COMPETITION SITE:

Google Maps : 397 de la Cité-des-Jeunes Blvd, Gatineau, QC J8Z 3P9

PARKING:

At Cégep de l'Outaouais, [333 de la Cité-des-Jeunes Blvd., Gatineau, QC](#) (Parking lots #4/5/6/7/7A). Please follow all posted directions and regulations at the CEGEP to avoid fines or towing, as well as along de la Cité-des-Jeunes Blvd. (Park side).

Parking spaces are limited—please consider carpooling!

Note: Parking spaces located at the **Gatineau Park Relais plein air** are not managed by the **Gatineau Loppet**. **Limited parking is available on a first-come, first-served basis.** A \$20 fee will be charged by the Relais plein air authorities.

Look for the purple markers and follow them — they will lead you where you need to go!



MONT-BLEU HIGH SCHOOL PLAN



RACE KIT PICK-UP:

⚠ IMPORTANT ⚠

All participants are responsible for picking up their race package before race day. Do not wait until the last minute!

NOTE: A participant may pick up race packages for other participants if the required information is provided (name and registration number). Once a race package has been picked up, this action is final. No duplicates will be issued.

Friday	Saturday	Sunday
February 13th, 2026	February 14th, 2026	February 15th, 2026
5 :00 p.m. - 9 :00 p.m.	7 :00 a.m. - 3 :00 p.m.	7 :00 a.m. - 12 :00 p.m.

Race package pick-up will take place at MONT-BLEU SECONDARY SCHOOL, 389 de la Cité-des-Jeunes Blvd., Gatineau, QC.

Simply follow the red markers — they will lead you directly to your destination.



RACE SCHEDULE:

All indoor and outdoor activities will take place at MONT-BLEU SECONDARY SCHOOL, 389 de la Cité-des-Jeunes Blvd., Gatineau, QC.

⚠ IMPORTANT ⚠

The start of the 50 km races will be given from Parking Lot P17, located in the La Pêche sector. All skiers must use the shuttle bus service to reach the start area.

	SATURDAY FEBRUARY 14 TH 2026 CLASSICAL TECHNIQUE	SATURDAY FEBRUARY 14 TH 2026 DISCOVERY WAVE		SUNDAY FEBRUARY 15 TH 2026 FREE TECHNIQUE	SUNDAY FEBRUARY 15 TH 2026 DISCOVERY WAVE
50 KM	▶ A WAVE: 9:00 a.m. ▶ B WAVE: 9:04 a.m. ▶ C WAVE: 9:08 a.m. ▶ D WAVE: 9:12 a.m.	9:16 a.m. – 9:21 a.m.	50 KM	▶ A WAVE: 9:00 a.m. ▶ B WAVE: 9:04 a.m. ▶ C WAVE: 9:08 a.m. ▶ D WAVE: 9:12 a.m.	9:16 a.m. à 9:21 a.m.
27 KM	▶ A WAVE: 9:00 a.m. ▶ B WAVE: 9:04 a.m. ▶ C WAVE: 9:08 a.m.	9:12 a.m. – 9:17 a.m.	27 KM	▶ A WAVE: 9:00 a.m. ▶ B WAVE: 9:04 a.m. ▶ C WAVE: 9:08 a.m.	9:12 a.m. – 9:17 a.m.
15 KM	▶ A WAVE: 1:00 p.m. ▶ B WAVE: 1:04 p.m. ▶ C WAVE: 1:08 p.m.	1:12 p.m. - 1:17 p.m.	10 KM	▶ A WAVE: 13h00 ▶ B WAVE: 13:04 ▶ C WAVE: 13:08	1:12 p.m. à 1:17 p.m.
5 KM	▶ A WAVE: 1:30 p.m. ▶ B WAVE: 1:34 p.m.	1:38 p.m. - 1:43 p.m.	5 KM	▶ A WAVE: 13:30 ▶ B WAVE: 13:34	1:38 p.m. – 1:43 p.m.
			2 KM	12:00 p.m.	

FUNDAMENTAL RULES

The International Competition Rules (ICR) of the International Ski Federation (FIS) and the Competition Rules (CCR) of Nordiq Canada will apply at the Gatineau Loppet. Among others, rule (ICR) f.2.1, which allows for the enforcement or prohibition of a specific technique at a given point on the course, will be applied by the jury. Particular attention will be paid to compliance with rules in section (ICR) 310.2.2 “Classic Technique” and rules (ICR) 343.8.1 and 343.12.1 regarding pole length in classic technique.

Registration Transfer

Registrations are non-transferable between individuals. Participating under a false identity constitutes a violation of event rules. Allowing another person to compete using your bib will result in that person's disqualification.

Equipment

All participants' skis must comply with the definition of cross-country racing skis as described in Section C of the FIS Specifications for Competition Equipment and Commercial Markings. Metal edges are prohibited.

Towing a sled or any other device is prohibited for any reason. Baby carriers are also prohibited for safety reasons.

Classic Technique

Participants in classic technique events must comply with the following definitions:

- Classic technique includes diagonal stride, double poling, uphill herringbone step (without a gliding phase), and turning steps.
- Turning steps may include a push only in the absence of tracks.
- Single or double skating is prohibited.
- Repeatedly entering and exiting the tracks is prohibited.

Start at Assigned Time

All participants are assigned to a start wave and must start with that wave. Any participant starting in an earlier wave will be disqualified.

If the race jury determines that circumstances beyond the participants' control prevent a start at the assigned time, the time will be adjusted to reflect the actual time spent on the course.

Late participants may start with the next available wave. No starts will be permitted after the final wave.

Discovery Wave

A non-timed discovery wave is available for all events (except the Mini Discovery).

- Participants will not be officially timed; therefore, no time comparisons will be made.
- Participants must still wear a timing chip and a numbered bib for safety purposes.
- The start time for discovery waves is not precise; participants may begin their race at any time within a 5-minute window to avoid crowding.
- Results will be provided in **ALPHABETICAL order** with the mention **COMPLETED**.

Complete Course

Participants must complete the entire course corresponding to the event for which they are registered and to which their bib is assigned.

The course must be completed on skis, using one's own propulsion only.

Sportsmanship

All participants must demonstrate fair and courteous behavior on the course and at event sites. Skiers must proceed with caution, taking into account course conditions and congestion.

Anti-Doping

The Gatineau Loppet is committed to clean sport. Anti-doping tests may be conducted if required to implement doping controls.

Littering Penalty

The Gatineau Loppet course covers a large area, and due to snow, wind, and grooming, litter is difficult to collect and quickly disperses into the surrounding forest.

To combat littering, all participants must dispose of waste only in designated areas at aid stations. Any participant caught discarding waste (wrappers, energy gels, hand warmers, etc.) outside aid station areas—whether observed by an official, volunteer, participant, or spectator—may receive a **15-minute penalty** added to their official time.

TIMING CHIP

You **MUST** wear your electronic timing chip. It must be secured around your ankle using the Velcro strap. No chip = no time.

Return the chip at the finish line. A **\$100 fee** will be charged if the chip is not returned.

BIB

You **MUST** wear your bib.

- Participants in **Wave A of the 50 km races** will wear Lycra bibs.
- Participants in other waves will wear standard bibs.
- The same applies to participants in the **27 km classic technique** event.
- All participants in the **27 km free technique** event will wear standard bibs.
- For all other races, the bib must be worn on the **front of the torso**.

Failure to wear your bib, or wearing it incorrectly, will result in **automatic disqualification**. Wearing a bib is required to access the start area.

COURSE SIGNAGE

The color of your bib corresponds to the color of the signage on the course. Be sure to follow your color throughout the course.



BROKEN POLES

If you break a pole at the start or on the course, a limited number of replacement poles are available at certain aid stations (Start, Lac Philippe, Herridge, O'Brien, Keogan, and Notch). Poles must be returned at the finish line.

RESULTS

Download the Sportstats Tracker mobile app to access all your live results!



WAXING

► In accordance with the rules of the International Ski and Snowboard Federation (FIS) and Nordiq Canada (NC), the Gatineau Loppet is now a fluorine-free event. The use of fluorinated glide and grip waxes is strictly prohibited. These new rules are fully aligned with the Gatineau Loppet's values and commitment to environmental protection and to health and safety related to the use of fluorinated products.

Ski waxing is **not permitted indoors** at Mont-Bleu Secondary School. The main Swix waxing area will be set up **outdoors**, near the gym exit toward the start area. Please note that you must wax your skis **before departing for Wakefield (P17)**, as there will be **no electricity available at P17**. A designated area will still be available in Wakefield (P17) for final touch-ups before your start. Snow conditions will be posted at the information kiosk.

► It is important to wax your skis **before arriving** at the event site.

► Waxing recommendations will be posted on social media and on the website **the day before the race**.

► The local company **Fresh Air Experience**, located at 1291 Wellington Street West, Ottawa, ON K1Y 0S4, will offer waxing services to Gatineau Loppet participants. Follow this link for details on available services (information available in English only): **waxing services**. Participants may drop off their skis at the store during the week leading up to the Gatineau Loppet, or at the company's booth at the Nordic Expo before 5:30 p.m. on Friday, February 13. Skis will be waxed during the day or evening and returned to the booth the following morning for pickup. Please note that this is a **paid service**—follow this link to reserve. For more information, contact them at **(613) 729-3002**.

SKIER BAGS

Since 2023, in an effort to offer an eco-friendly event, the Gatineau Loppet no longer provides plastic bags for personal belongings left at the start lines of the 5, 10, 15, 27, and 50 km races. **Personal bags**, such as backpacks or resealable handled bags, are now **mandatory**. The maximum accepted volume is **50 litres**, or the equivalent of a carry-on airline bag.

Procedure

A **yellow tag** bearing your bib number will be provided when you pick up your race package. Please attach this tag **clearly and visibly** to one of your bag's handles.

Bags may be dropped off directly at **Room 1418**. If not, they will be collected at the race start by our volunteer team.

You may retrieve your bag at the **Skier Bag Room**, located in **Room 1418** at Mont-Bleu Secondary School. To access it, follow the path marked with **yellow markers**.

It is strictly prohibited to leave equipment bags inside the **Relais plein air** facilities. Any bags left at the Relais plein air will be transported to the Skier Bag Room. We also ask that you do not leave clothing or other items in the start area. Any items left in the start area will be collected and stored in the Skier Bag Room, located in **Room 1418** at Mont-Bleu Secondary School.

To access it, follow the path marked with yellow markers.



FIRST AID

First aid services are provided by professionals from **Groupe Instant Santé**. If necessary, skier evacuation is planned on all courses, including the most remote sections.

In case of emergency, **CALL: 819-576-8408**

AID STATIONS

- Water and **XACT energy drinks** will be available on the course (see maps for exact locations).
- A selection of snacks will also be available on site.

Aid Station	Races	Water	Electrolytes (Xact nutrition)	Chicken broth	Water + honey	Xact bar (Fruit2 - gummies)	Raisin Glosette	Banana	Oranges	Oat/Chocolate cookies	Pretzels
P17 start area	50km	X									
Lac Philippe - P19	50km	X	X			X					
Herridge - P16	50km	X	X	X	X	X	X			X	X
O'Brien - P11	50km	X	X	X	X	X	X			X	
Keogan	50km	X	X		X	X	X				X
Notch	50km, 27km, 15km	X	X		X	X	X			X	X
Mont-Bleu (Demi tour)	27km	X	X			X					
Finish	All races	X	X	X		X	X	X	X	X	

RESTROOMS

Restrooms will be available at the start areas, at the P19 aid station (10th km), at Herridge Shelter (21st km), at Parking Lot P11 (31st km), at Keogan Shelter (35th km), at the lower section of the Domaine Mackenzie-King parking lot (41st km), at the intersection of Gatineau Parkway and Champlain Parkway (43rd km), and at the Notch aid station (44th km).

Changing rooms and restrooms are available inside **Mont-Bleu Secondary School**.

Look for the lime-colored markers and follow them — they will lead you where you need to go!

WORLDLOPPET PASSPORT

► Worldloppet Passport holders are invited to create or update their **MyLoppet** profile on the Worldloppet website, which will confirm their participation in the **2026 Gatineau Loppet**. The passport is available for purchase at a cost of **\$63.24** (taxes included, plus service fees).

► Skiers wishing to have their passport stamped must visit the **registration desk** located in the **Ski Expo**.

Simply follow the orange markers — they will lead you directly to your destination.



WORLDLOPPET COCKTAIL

Passport holders are invited to the Worldloppet Lounge as well as the Worldloppet Cocktail, taking place on Saturday at 4:30 p.m. in the Agora at Mont-Bleu Secondary School.

To access the venue, follow the path marked with light purple markers.



WORLDLOPPET MASTERS

Skiers who achieve Worldloppet Master status following a Gatineau Loppet race must visit the registration desk located in the Ski Expo in order to be officially inducted.

MEALS

Breakfast

Participants and spectators may purchase breakfast at the Mont-Bleu Secondary School cafeteria starting at 6:00 a.m. on Saturday and Sunday.

Follow this link to view the menus.

Post-Race Meal

Upon presentation of your bib, a meal will be served in the cafeteria for skiers in the 5, 10, 15, 27, and 50 km events. For participants wearing Lycra bibs, a meal coupon will be attached to the envelope containing your race package.

Meals are served from 11:30 a.m. to 5:00 p.m. on Saturday and from 11:30 a.m. to 4:00 p.m. on Sunday. Meals are also available for purchase by non-participants.

Simply follow the grey markers — they will lead you directly to your destination.



MEDAL CEREMONY

Skiers must be present to receive prize money or awards. Prize money will be awarded once results become official, around 1:30 p.m., at the Ski Expo. Medals must be claimed during the weekend. Results will be posted at the Ski Expo and live on the website gatineauloppet.com, as well as on the Sportstats Android and iOS app.

SKIER PINS

Skiers who have participated in 5, 10, 15, 20, 25, or 30 events since the beginning of the Gatineau Loppet may receive a pin corresponding to their number of participations. Pins will be available at the Ski Expo, at the medal ceremony table. You must have completed at least one event in 2026 to receive a pin.

SUSTAINABLE DEVELOPMENT

The Gatineau Loppet aims to become an eco-responsible event. Thank you for helping by recycling, composting, and reducing waste. All waste will be sorted by the Enviro Educ-Action group. During your race, please dispose of waste only at aid stations and in designated areas to help keep the park clean. Waste collected at aid stations will also be sorted to reduce our environmental footprint.

SAFE SPORT

Everyone has the right to a safe and inclusive environment, free from abuse or exploitation. If you experience, or suspect that someone else is experiencing, abuse, discrimination, violence, or any other form of maltreatment or exploitation, please contact the Canadian Sport Helpline or the Gatineau Loppet representative on site. They can direct you to support resources and assist you in filing a complaint. **In case of emergency, call 911.**

euro-sports

NORDIC

Ottawa - Canada

100 km Ultra Challenge, presented by **Euro-Sports**, your multisport lifestyle store in Ottawa! This challenge rewards the first male and female skiers to complete both the **50 km Classic Technique** and **50 km Free Technique** races at the **2026 Gatineau Loppet**.

A total of **\$500 in prize money** will be awarded: **\$250** to the best combined **men's** time and **\$250** to the best combined **women's** time.



AWARENESS DOCUMENT FOR PARTICIPANTS IN THE 50 KM AND 27 KM FREE TECHNIQUE EVENTS

Respecting the Purpose of the Gatineau Park Trails

Dear Participants,

Welcome to the 50 km and 27 km Free Technique events in the magnificent Gatineau Park! This exceptional site is a natural treasure that we are privileged to use for our competition. In order to preserve this unique environment and ensure harmonious coexistence with other park users, we ask that you respect the following guidelines:

1) Respect for Wildlife and Vegetation

- a) Stay on marked trails to prevent erosion and protect fragile vegetation.
- b) Do not disturb local wildlife: observe animals from a distance and avoid excessive noise.

2) Waste Management

- a) Make sure to dispose of waste in designated trash receptacles.
- b) Use reusable bottles or hydration flasks to reduce the use of single-use plastics.
- c) If you come across litter, please feel free to pick it up to help keep the site clean.

3) Sharing the Trails with Other Users

- a) Share the trails respectfully with other athletes, hikers, and outdoor enthusiasts.
- b) Maintain a courteous and respectful attitude at all times.
- c) Slow down in busier sections and signal your presence to other users when necessary.

4) Safety and Responsibility

- a) Follow safety guidelines and park regulations.
- b) In the event of an incident or accident, notify a volunteer or a member of the organizing team.
- c) Pay attention to weather conditions and equip yourself accordingly.

By following these guidelines, you are helping to protect Gatineau Park and ensure the sustainability of this event.

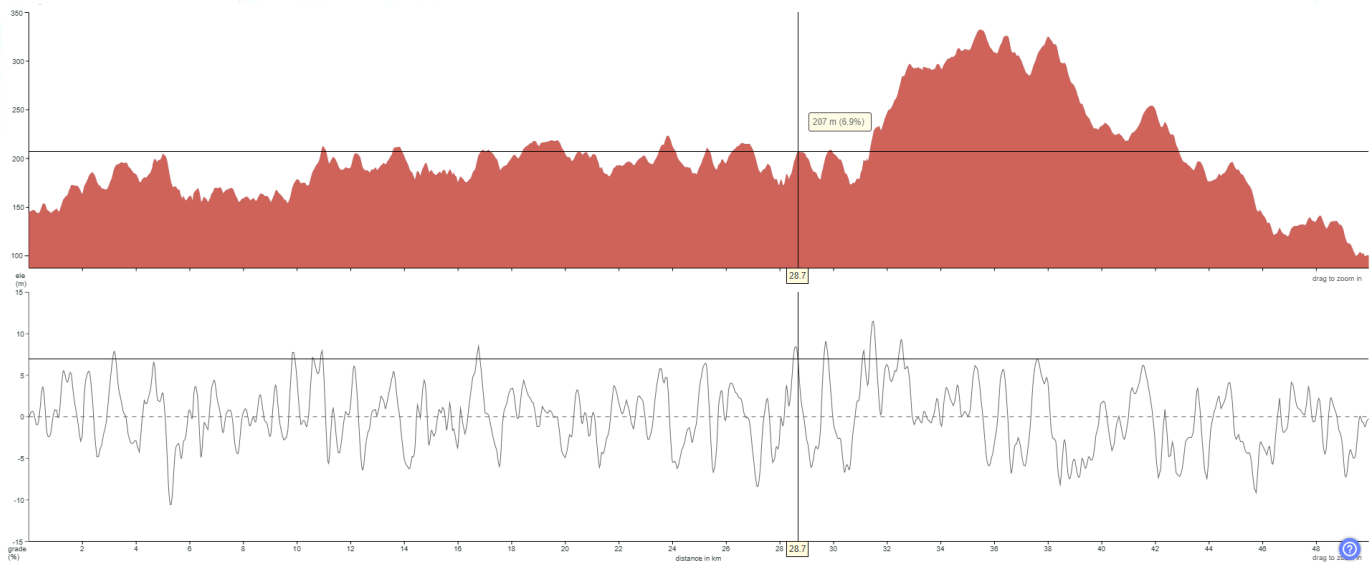
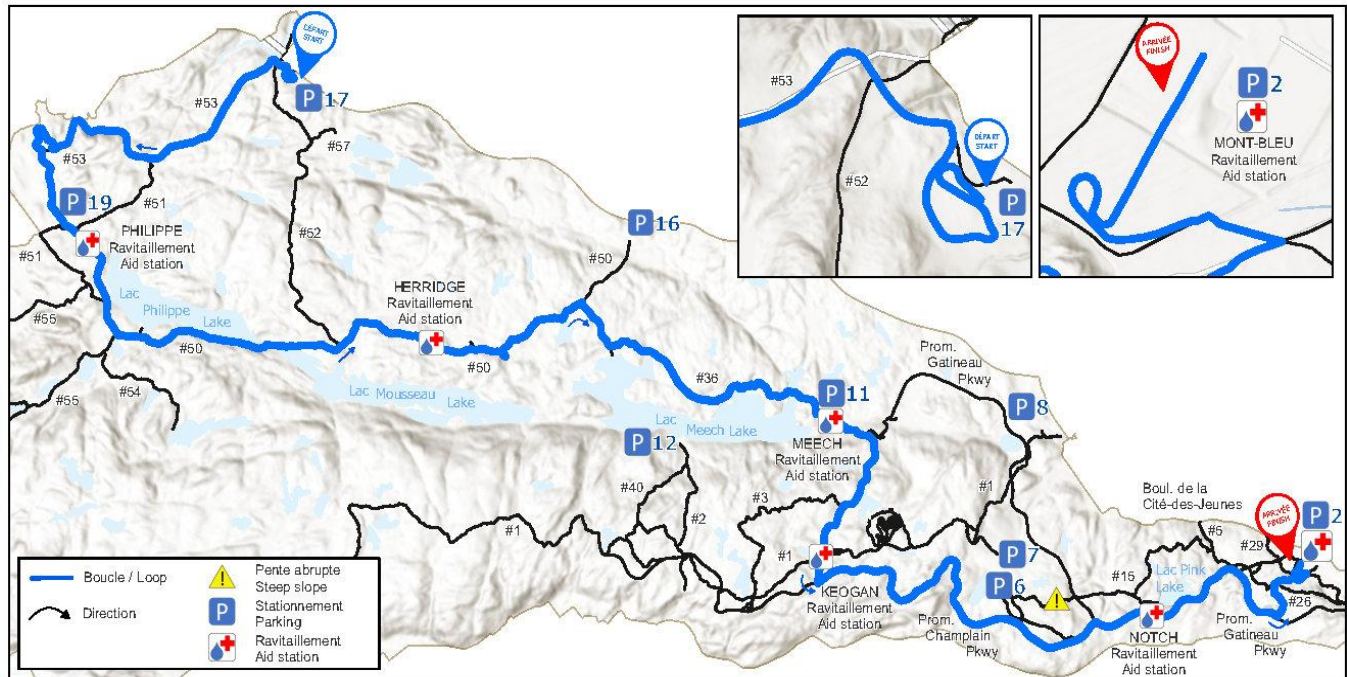
Thank you for your cooperation, and best of luck in your race!

Jérôme Poulin
Executive Director
Gatineau Loppet

COURSES

Saturday February 14th 2026 :

50 km Classical Technique



START TIME:

EVENT	SATURDAY CLASSICAL TECHNIQUE	SATURDAY DISCOVERY WAVE
50 KM	► VAGUE A: 9 :00 a.m. ► VAGUE B: 9 :04 a.m. ► VAGUE C: 9 :08 a.m. ► VAGUE D: 9 :12 a.m.	► 9:16 a.m. – 9:21 a.m.

AGE CATEGORY / SKILL LEVEL:

- This race is intended for intermediate-level skiers and above.
- Skiers must be 16 years of age or older to participate.

TIME LIMIT:

For safety and health reasons, skiers who have not reached the 30 km mark by 1:45 p.m. (an average speed of 6.3 km/h) will not be permitted to continue the race.

SHUTTLE BUSES:

Shuttle buses depart from Mont-Bleu Secondary School.

SHUTTLE BUS SCHEDULE AT MONT-BLEU SECONDARY SCHOOL:

A WAVE	B WAVE	C WAVE	D WAVE & Discovery
7:30 a.m.	7:35 a.m.	7:45 a.m.	7:50 a.m.

CLASSICAL TECHNIQUE:

SANCTION:



The 50 km Classic Technique race is listed on the International Ski Federation (FIS) calendar, and FIS rules will apply. The first wave of the 50 km Classic Technique event will be sanctioned by Nordiq Canada for inclusion in the FIS points list. All skiers participating in this first wave must provide one of the following licenses:

- FIS license
- License issued by a national federation (e.g., international competitors)

For skiers who do not hold a license, the Gatineau Loppet will provide a Ski de fond Canada supporting member license (day license).

PRIZE MONEY AND AWARDS (MEN AND WOMEN):

- A SWIX toque will be given to all participants registered in a 50 km event.
- Cash prizes will be awarded to the top three finishers in both the women's and men's categories.

1st place: \$1,200

2nd place: \$600

3rd place: \$300

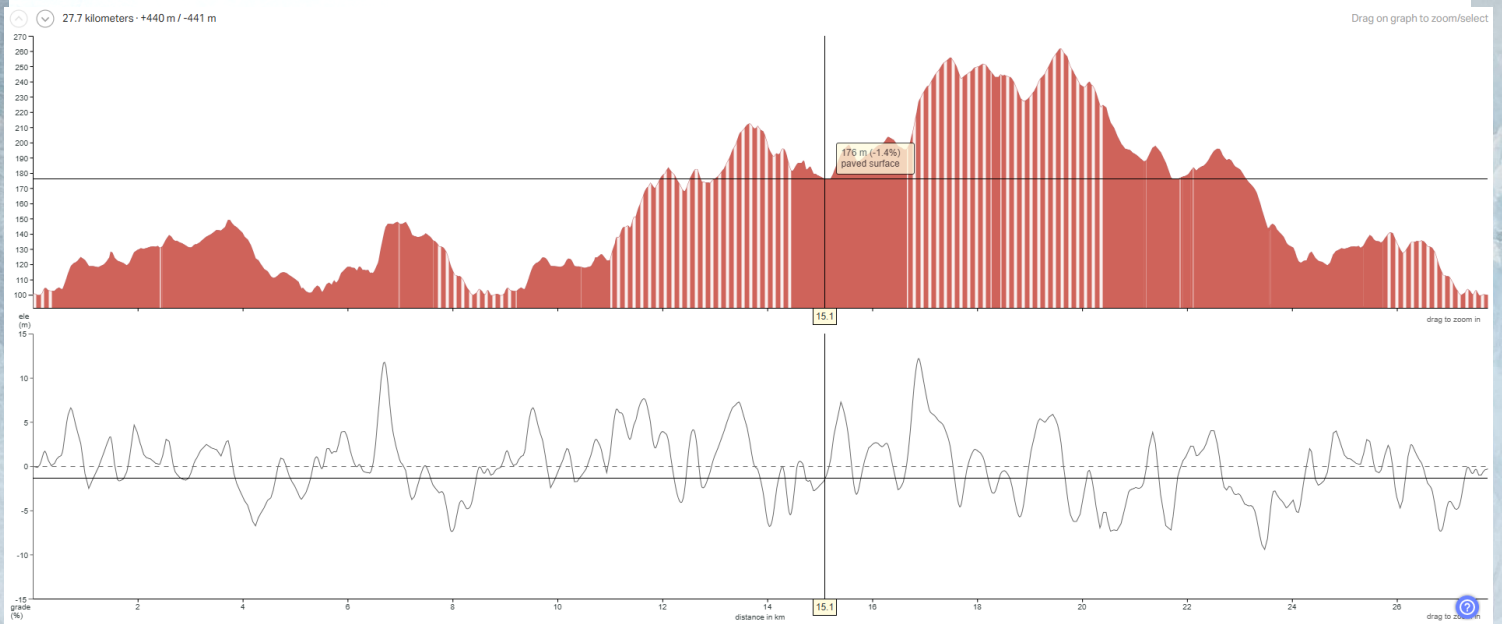
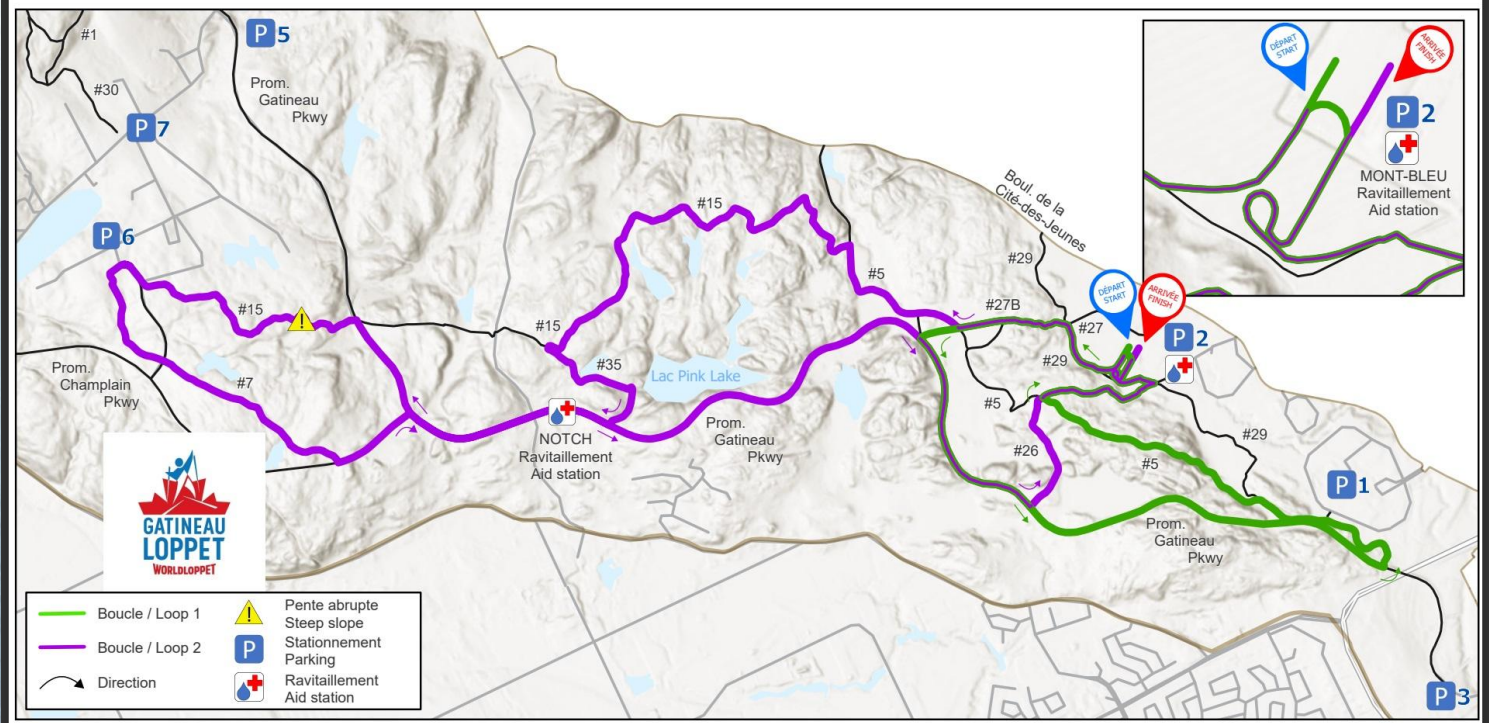
MEDAL CEREMONY:

- Skiers must be present to receive prize money or awards. Prizes and awards will be presented during the official medal ceremonies (podiums) held at the Ski Expo once results become official, around 1:30 p.m. Medals must be claimed during the weekend. Results will be posted at the Ski Expo and live online.
- Medals will be awarded for each age category.

POWERED BY



27 km Classical Technique



START TIME:

EVENT	SATURDAY CLASSICAL TECHNIQUE	SATURDAY DISCOVERY WAVE
27 km	▶ A WAVE: 9:00 a.m. ▶ B WAVE: 9:04 a.m. ▶ C WAVE: 9:08 a.m.	▶ 9:12 – 9:17 a.m.

AGE CATEGORY / SKILL LEVEL:

- This race is intended for intermediate-level skiers and above.
- There is no age limit to participate in these races.

PRIZE MONEY AND AWARDS (MEN AND WOMEN):

- A neck gaiter will be given to all participants registered in a 27 km event.
- Best overall time for each distance, for both men and women.

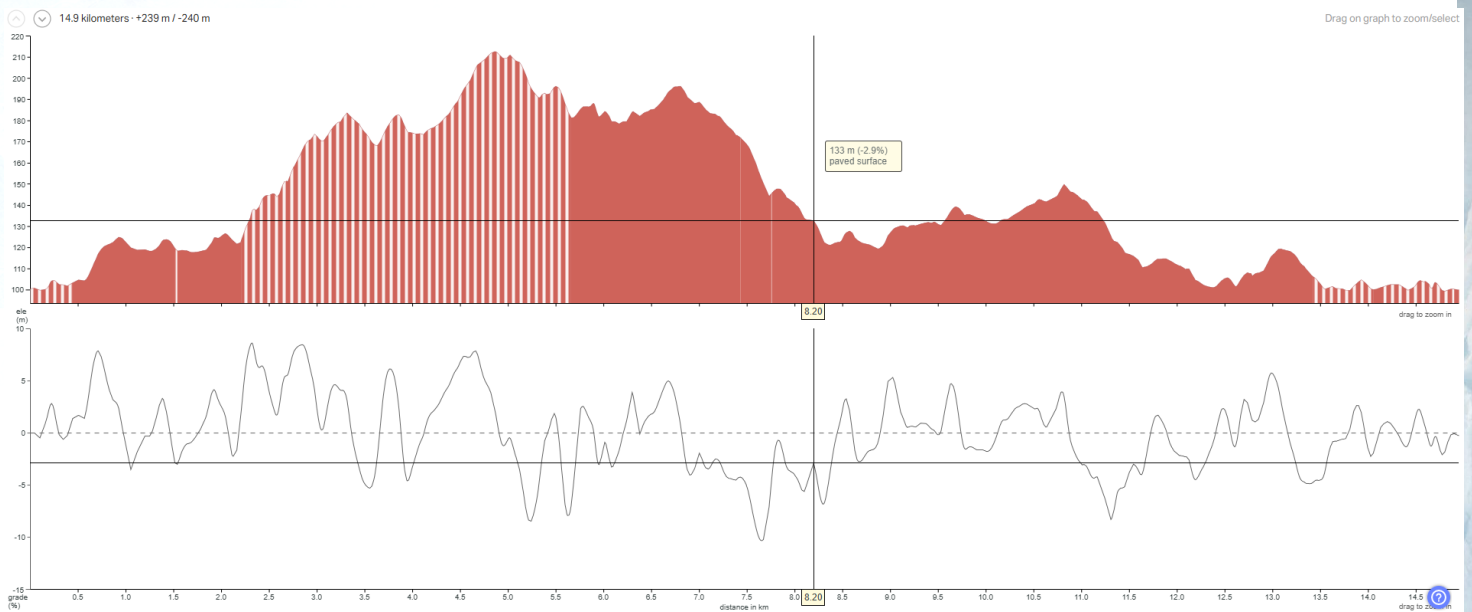
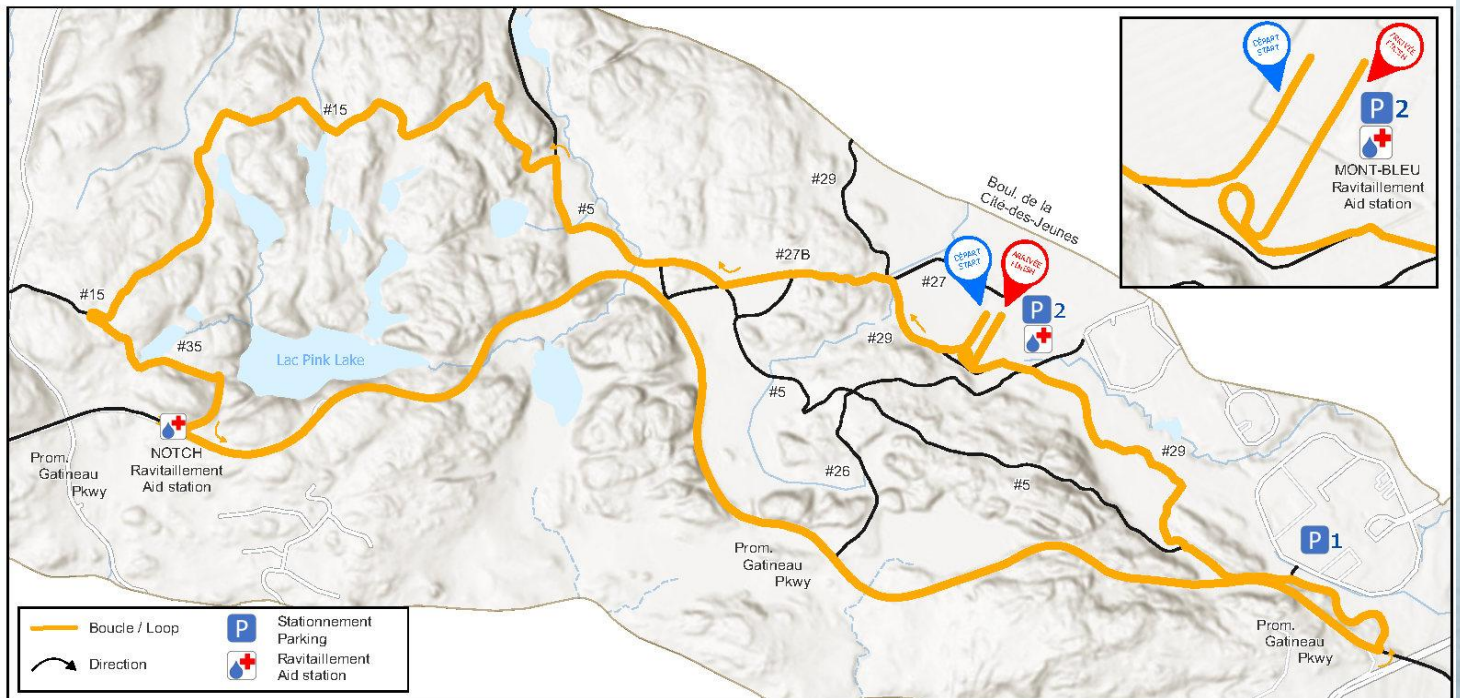
MEDAL CEREMONY:

- Skiers must be present to receive prize money or awards. Prizes and awards will be presented during the official medal ceremonies (podiums) held at the Ski Expo once results become official, around 1:30 p.m. Medals must be claimed during the weekend. Results will be posted at the Ski Expo and live online.
- Medals will be awarded for each age category.

POWERED BY



15 km Classical technique



START TIME:

EVENT	SATURDAY CLASSICAL TECHNIQUE	SATURDAY DISCOVERY WAVE
15 KM	<ul style="list-style-type: none">▶ A WAVE: 1:00 p.m.▶ B WAVE: 1:04 p.m.▶ C WAVE: 1:08 p.m.	<ul style="list-style-type: none">▶ 1:12 p.m. – 1:17 p.m.

AGE CATEGORY / SKILL LEVEL:

- This race is intended for intermediate-level skiers and above.
- There is no age limit to participate in these races.

PRIZE MONEY AND AWARDS (MEN AND WOMEN):

- Best overall time for each distance, for both men and women.

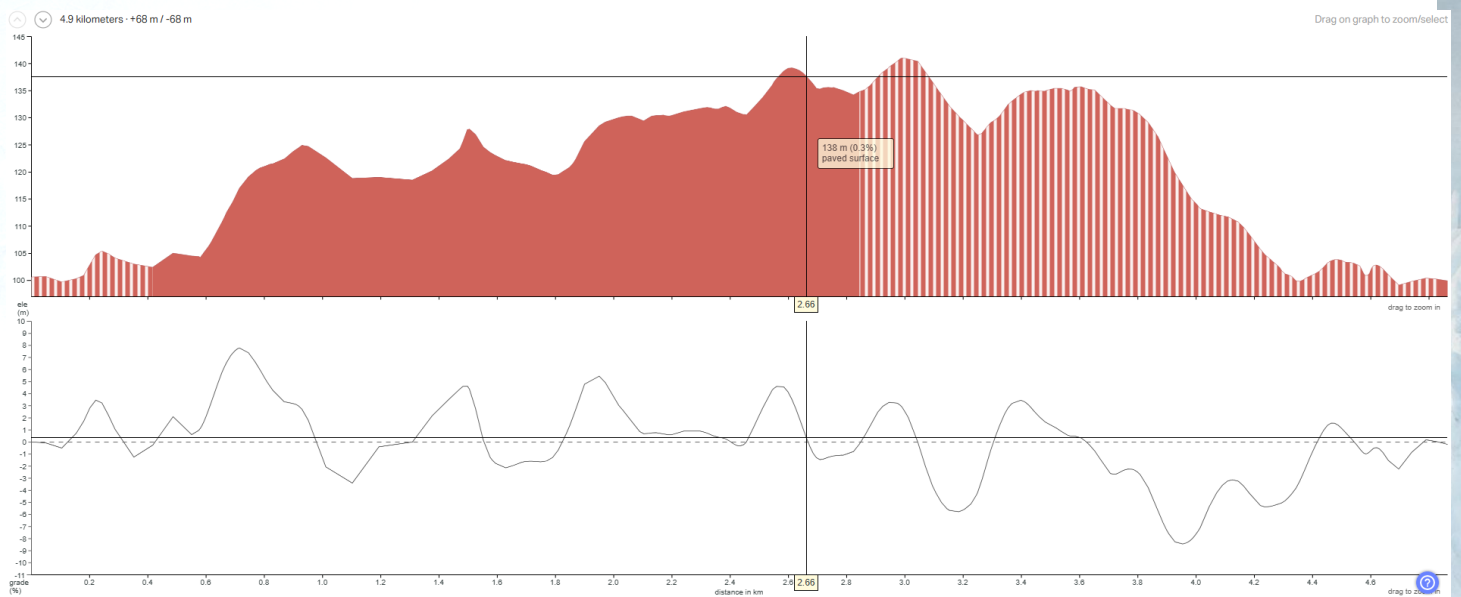
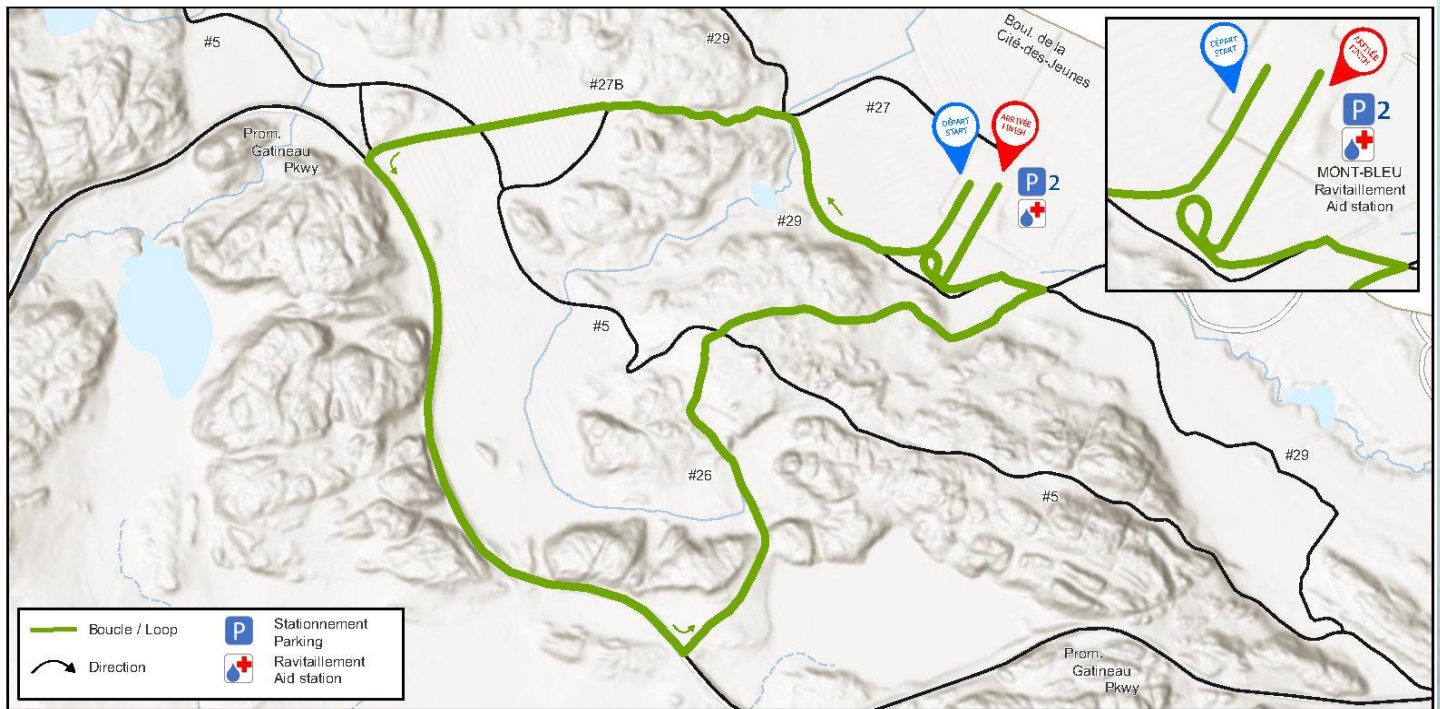
MEDAL CEREMONY:

- Skiers must be present to receive prize money or awards. Prizes and awards will be presented during the official medal ceremonies (podiums) held at the Ski Expo once results become official, around 3:00 p.m. Medals must be claimed during the weekend. Results will be posted at the Ski Expo and live online.
- Medals will be awarded for each age category.

POWERED BY



5 km Classical Technique



START TIME

EVENT	SATURDAY CLASSICAL TECHNIQUE	SATURDAY DISCOVERY WAVE
5 KM	► A WAVE: 1:30 p.m. ► B WAVE: 1:34 p.m.	► 1:38 p.m. – 1:43 p.m.

AGE CATEGORY / SKILL LEVEL:

- This race is intended for intermediate-level skiers and above.
- There is no age limit to participate in these races.

PRIZE MONEY AND AWARDS (MEN AND WOMEN):

- Best overall time for each distance, for both men and women.

MEDAL CEREMONY:

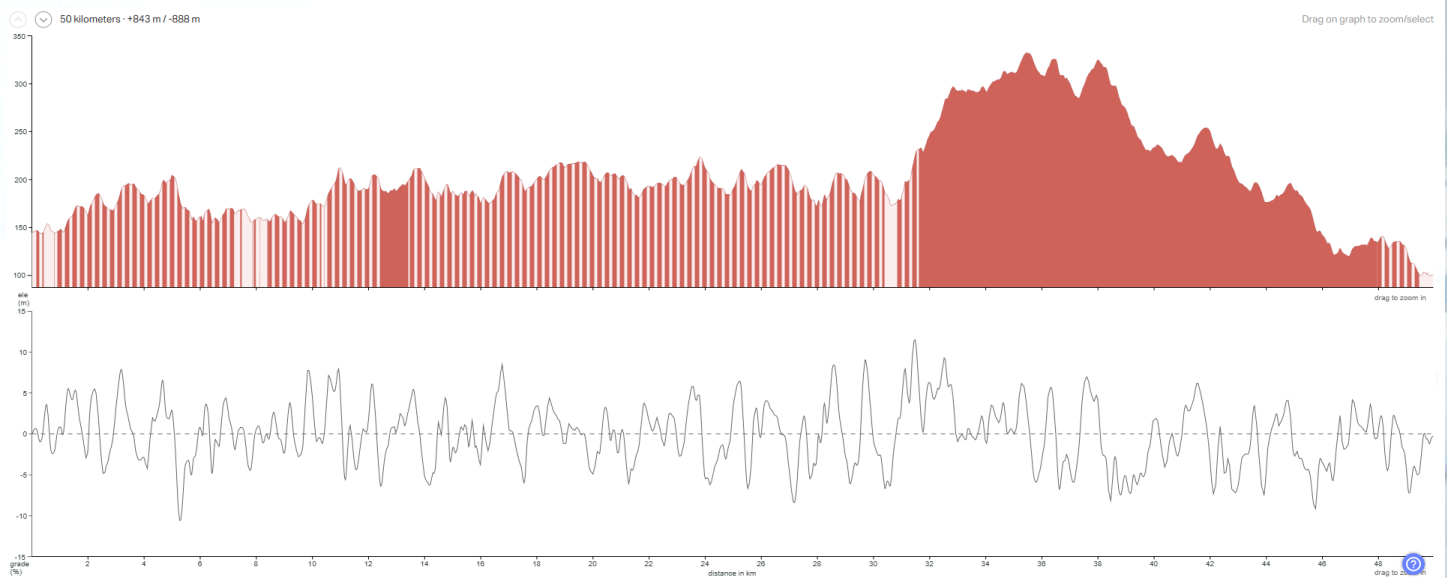
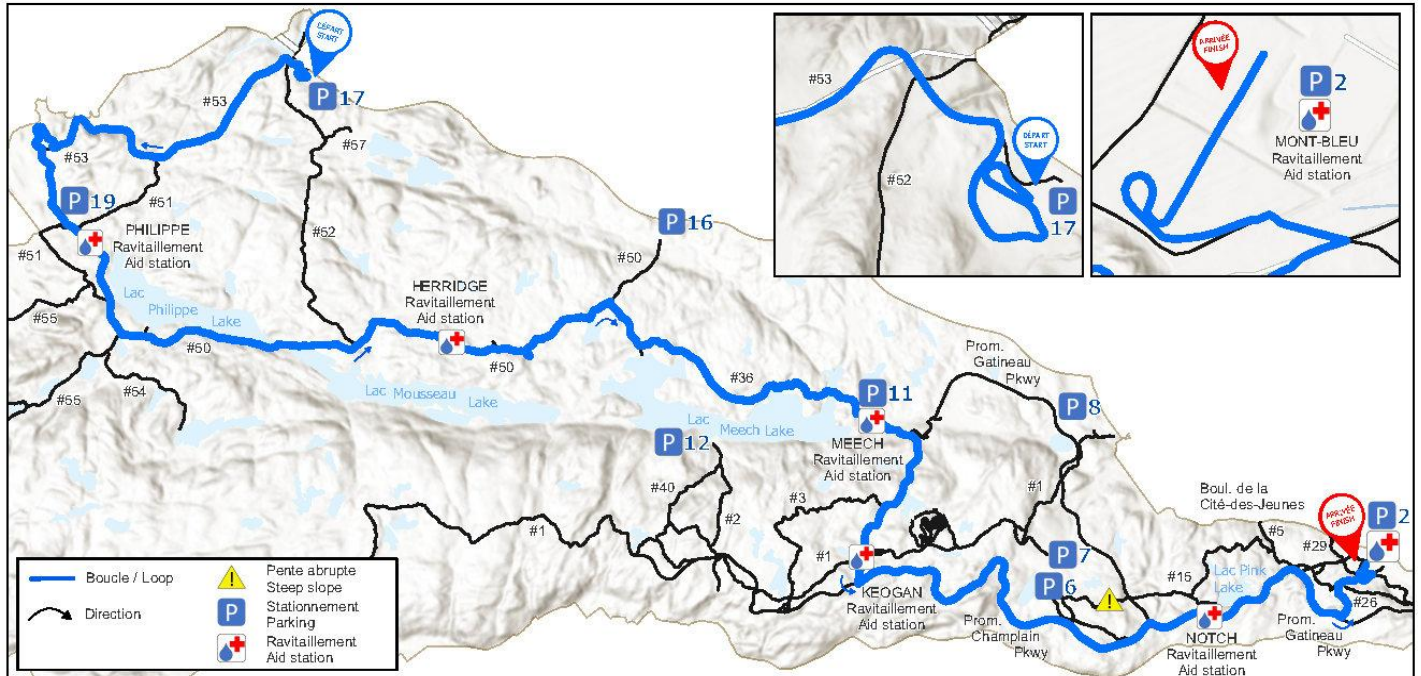
- Skiers must be present to receive prize money or awards. Prizes and awards will be presented during the official medal ceremonies (podiums) held at the Ski Expo once results become official, around 3:00 p.m. Medals must be claimed during the weekend. Results will be posted at the Ski Expo and live online.
- Medals will be awarded for each age category.

POWERED BY



Sunday February 15th, 2026:

50 km Free Technique



START TIME:

EVENT	SUNDAY FREE TECHNIQUE	SUNDAY DISCOVERY WAVE
50 KM	<ul style="list-style-type: none"> ▶ A WAVE: 9:00 a.m. ▶ B WAVE: 9:04 a.m. ▶ C WAVE: 9:08 a.m. ▶ D WAVE: 9:12 a.m. 	▶ 9:16 a.m. – 9:21 a.m.

AGE CATEGORY / SKILL LEVEL:

- This race is intended for intermediate-level skiers and above.
- Skiers must be 16 years of age or older to participate.

TIME LIMIT:

For safety and health reasons, skiers who have not reached the 30 km mark by 1:45 p.m. (an average speed of 6.3 km/h) will not be permitted to continue the race.

SHUTTLE BUSES:

Shuttle buses depart from Mont-Bleu Secondary School.

SHUTTLE BUS SCHEDULE AT MONT-BLEU SECONDARY SCHOOL:

A WAVE	B WAVE	C WAVE	D WAVE & Discovery
7:30 a.m.	7:35 a.m.	7:45 a.m.	7:50 a.m.

PRIZE MONEY AND AWARDS (MEN AND WOMEN):

- ▶ A SWIX toque will be given to all participants registered in a 50 km event.
- ▶ Cash prizes will be awarded to the top three finishers in both the women's and men's categories.

1st place: \$6,00

2nd place: \$300

3rd place: \$150

MEDAL CEREMONY:

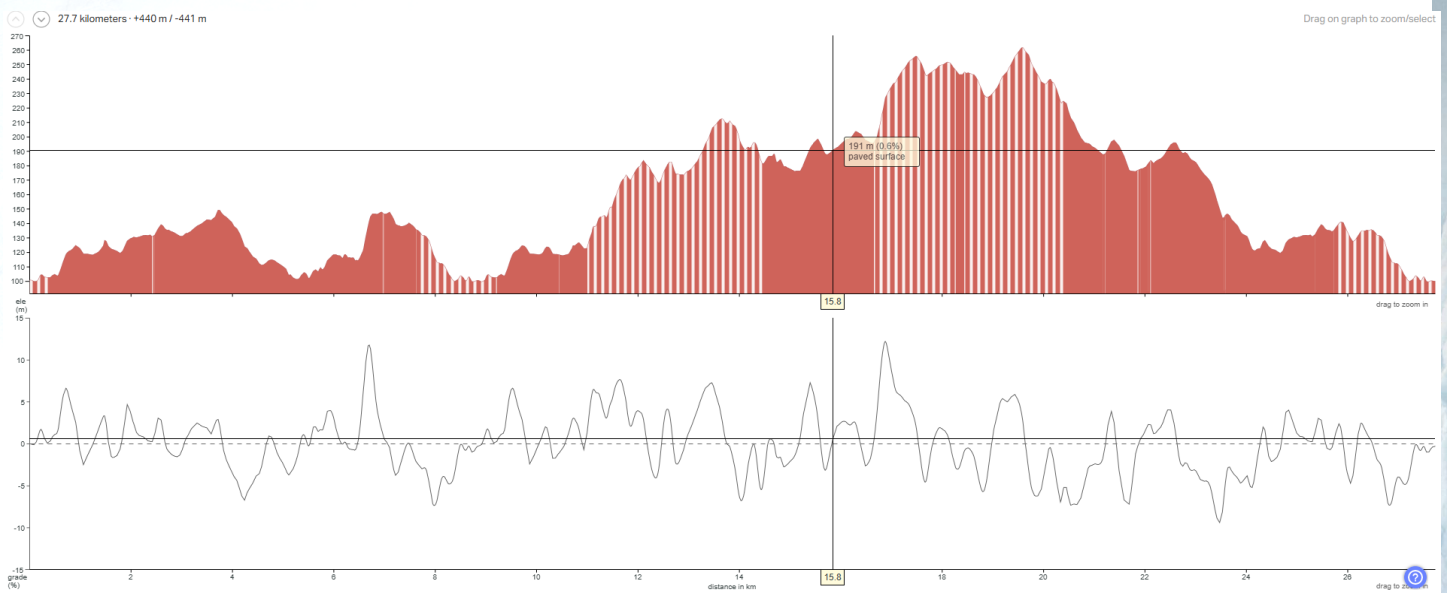
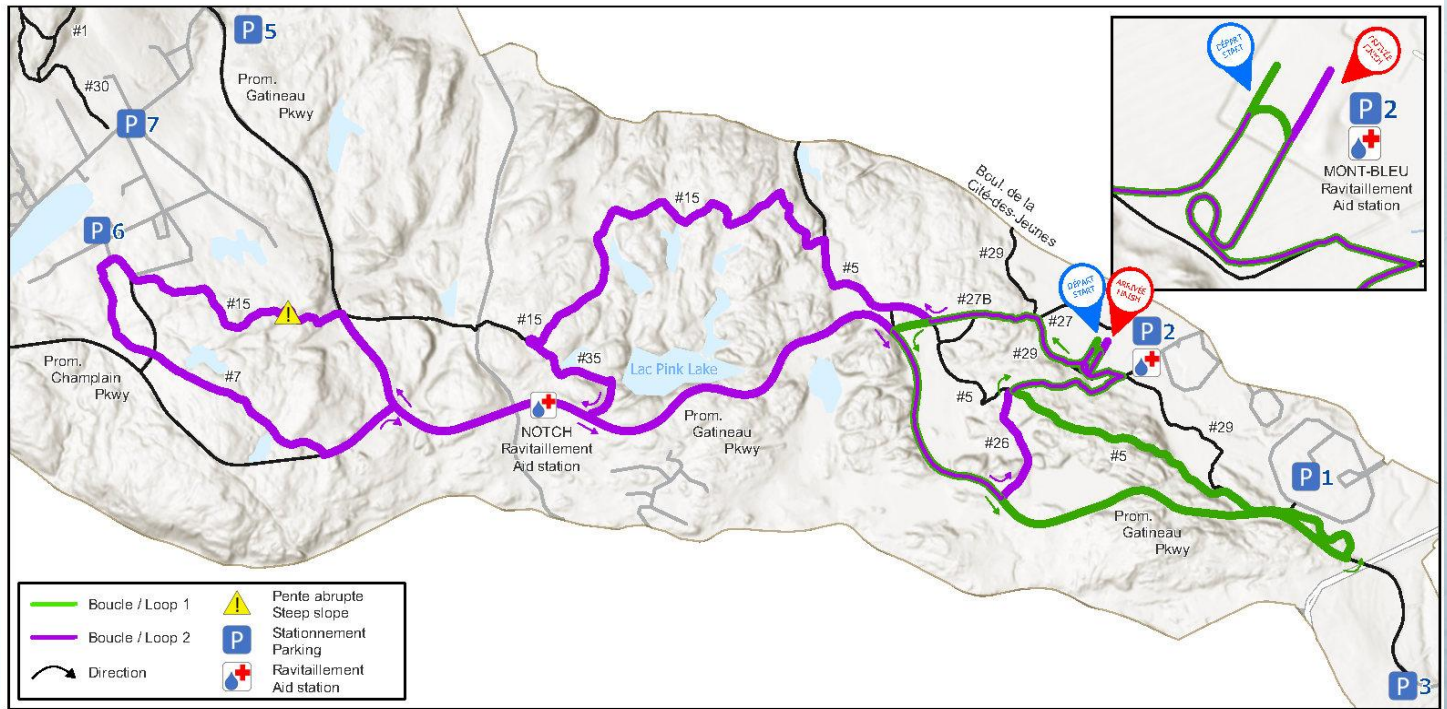
- Skiers must be present to receive prize money or awards. Prizes and awards will be presented during the official medal ceremonies (podiums) held at the Ski Expo once results become official, around 1:30 p.m. Medals must be claimed during the weekend. Results will be posted at the Ski Expo and live online.
- Medals will be awarded for each age category.

POWERED BY



OUTAOUAIS
tourismeoutaouais.com

27 km free Technique



START TIME:

EVENT	SATURDAY CLASSICAL TECHNIQUE	SATURDAY DISCOVERY WAVE
27 km	▶ A WAVE: 9:00 a.m. ▶ B WAVE: 9:04 a.m. ▶ C WAVE: 9:08 a.m.	▶ 9:12 – 9:17 a.m.

AGE CATEGORY / SKILL LEVEL:

- This race is intended for intermediate-level skiers and above.
- There is no age limit to participate in these races.

PRIZE MONEY AND AWARDS (MEN AND WOMEN):

- A neck gaiter will be given to all participants registered in a 27 km event.
- Best overall time for each distance, for both men and women.

MEDAL CEREMONY:

- Skiers must be present to receive prize money or awards. Prizes and awards will be presented during the official medal ceremonies (podiums) held at the Ski Expo once results become official, around 1:30 p.m. Medals must be claimed during the weekend. Results will be posted at the Ski Expo and live online.
- Medals will be awarded for each age category.

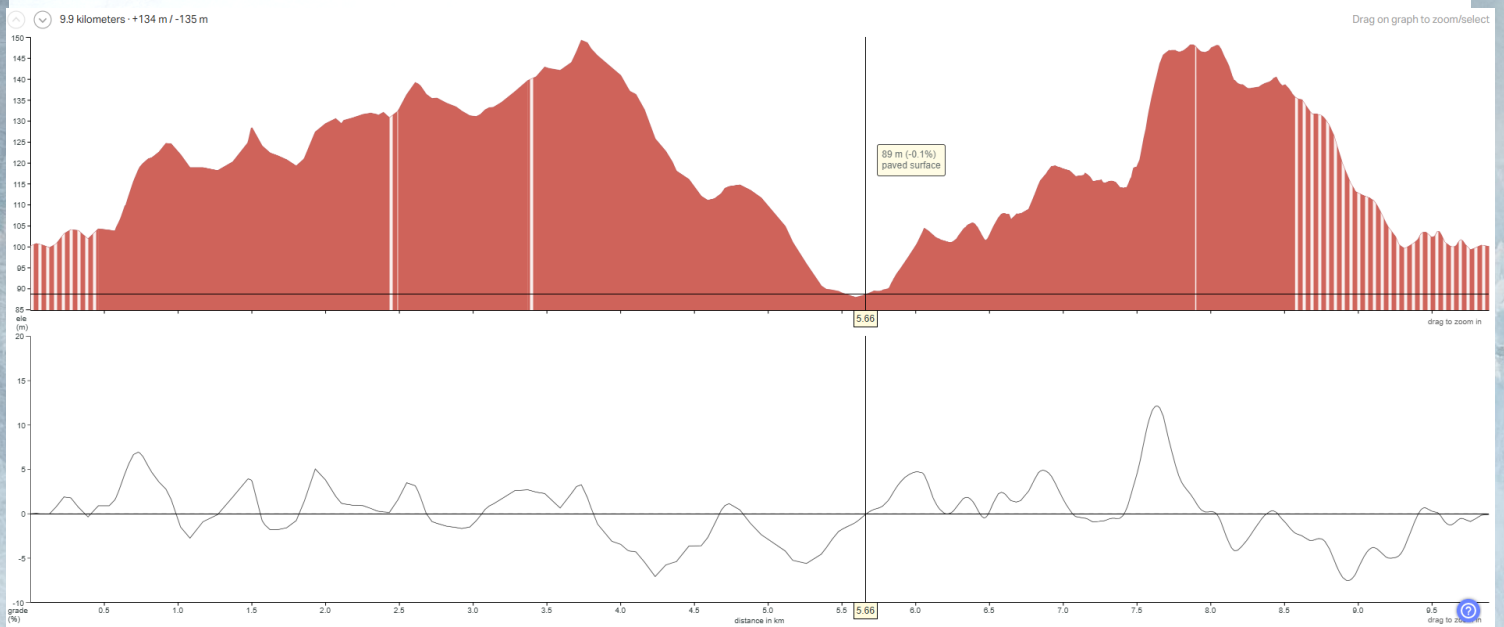
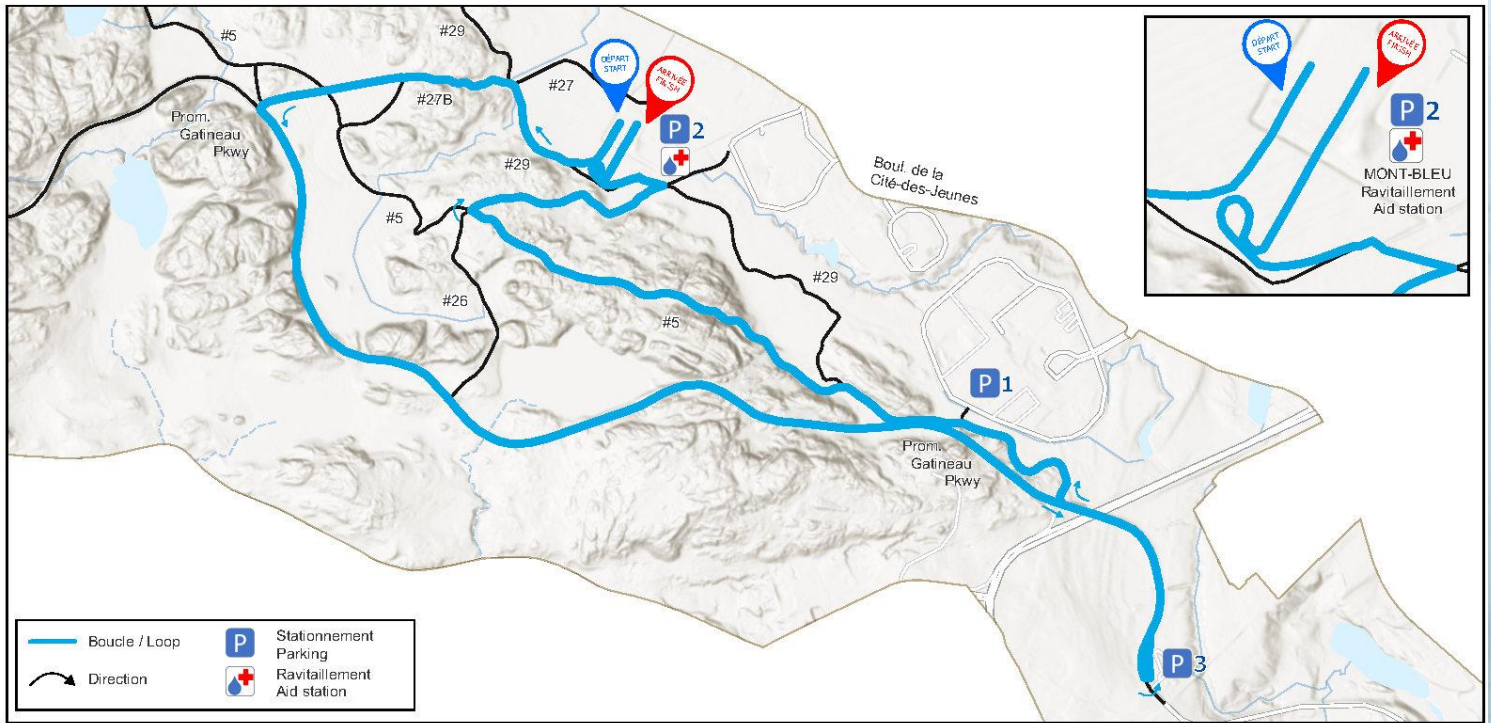
POWERED BY



OTTO'S  SUBARU

OTTO'S  OTTAWA

10 km Free Technique



START TIME:

EVENT	SATURDAY CLASSICAL TECHNIQUE	SATURDAY DISCOVERY WAVE
10 KM	<ul style="list-style-type: none">▶ A WAVE: 1:00 p.m.▶ B WAVE: 1:04 p.m.▶ C WAVE: 1:08 p.m.	<ul style="list-style-type: none">▶ 1:12 p.m – 1:17 p.m.

AGE CATEGORY / SKILL LEVEL:

- This race is intended for intermediate-level skiers and above.
- There is no age limit to participate in these races.

PRIZE MONEY AND AWARDS (MEN AND WOMEN):

- Best overall time for each distance, for both men and women.

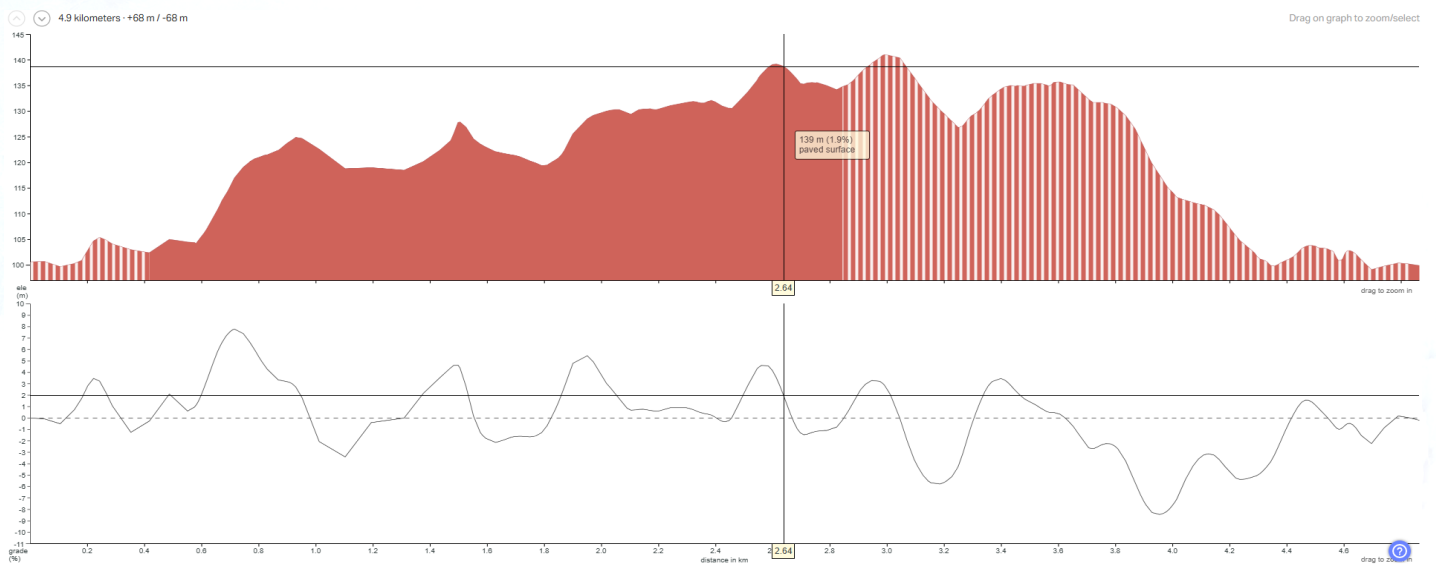
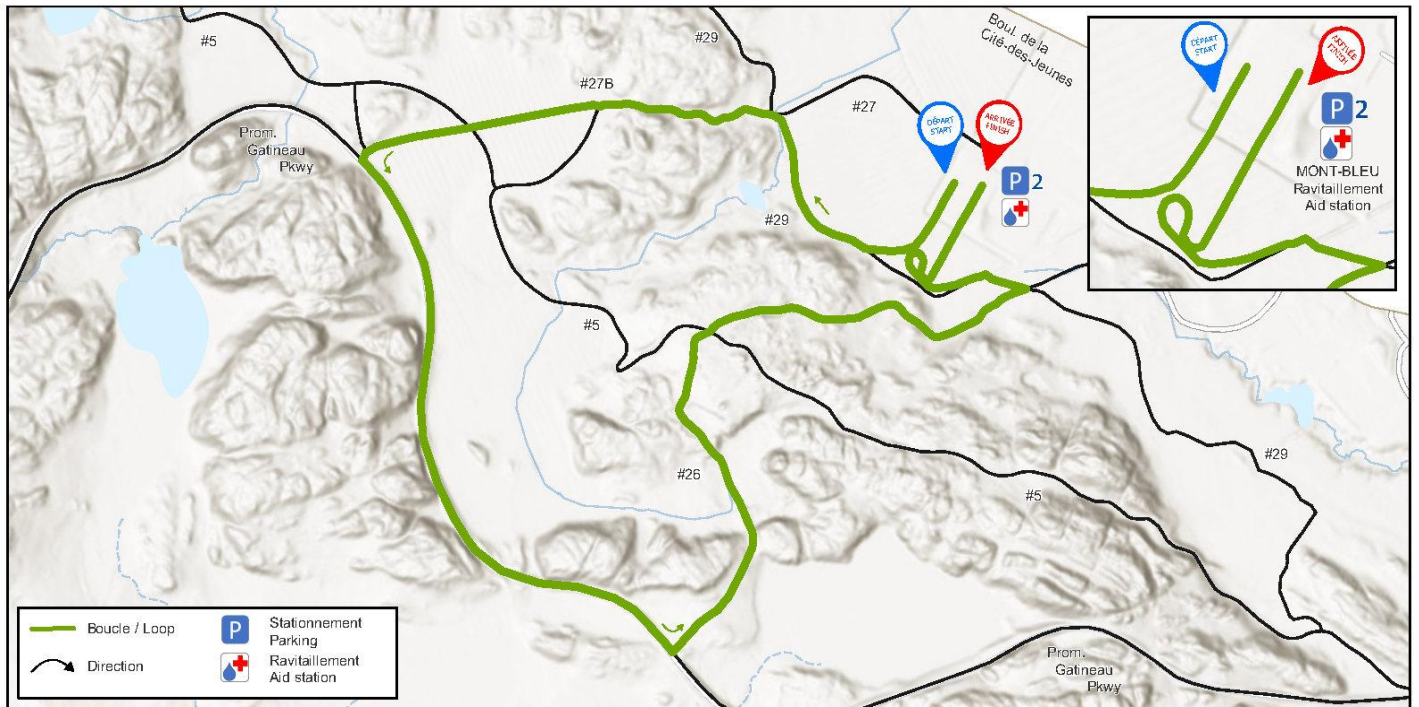
MEDAL CEREMONY:

- Skiers must be present to receive prize money or awards. Prizes and awards will be presented during the official medal ceremonies (podiums) held at the Ski Expo once results become official, around 2:30 p.m. Medals must be claimed during the weekend. Results will be posted at the Ski Expo and live online.
- Medals will be awarded for each age category.

POWERED BY



5 km Free Technique



START TIME:

EVENT	SATURDAY CLASSICAL TECHNIQUE	SATURDAY DISCOVERY WAVE
5 KM	▶ A WAVE: 1h30 p.m. ▶ B WAVE: 1h34 p.m.	▶ 1h38 p.m. - 1h43 p.m.

AGE CATEGORY / SKILL LEVEL:

- This race is intended for intermediate-level skiers and above.
- There is no age limit to participate in these races.

PRIZE MONEY AND AWARDS (MEN AND WOMEN):

- Best overall time for each distance, for both men and women.

MEDAL CEREMONY:

- Skiers must be present to receive prize money or awards. Prizes and awards will be presented during the official medal ceremonies (podiums) held at the Ski Expo once results become official, around 3:000 p.m. Medals must be claimed during the weekend. Results will be posted at the Ski Expo and live online.
- Medals will be awarded for each age category.

POWERED BY



CCN
NCC

Parc de la Gatineau
Gatineau Park

LA MINI DÉCOUVERTE

The **Mini Découverte Desjardins** offers a unique opportunity to introduce young skiers to the joys of cross-country skiing in a friendly and festive atmosphere. Depending on their age, young skiers will have the option to complete **one 1 km loop** or **two loops totaling 2 km**. Hot chocolate, snacks, and fun activities will reward their achievements!

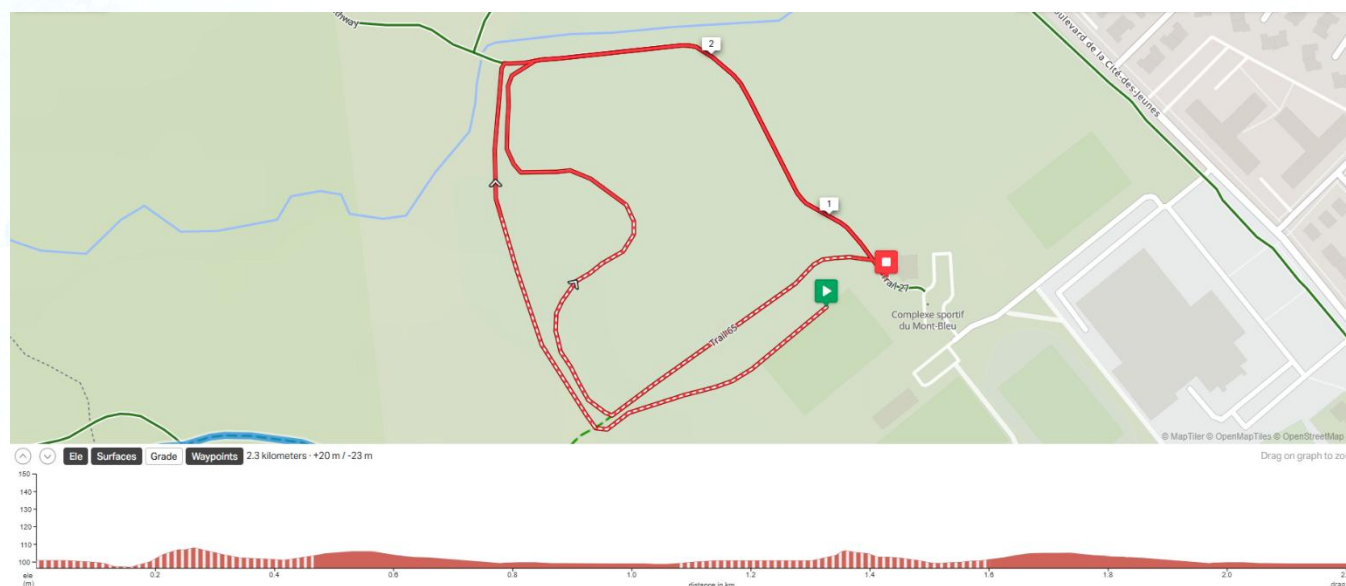
This year, in collaboration with the **Ski à l'école** association, **Desjardins** will offer approximately 100 registrations so that youth aged 6 to 16 from nearby schools can discover and experience the benefits of cross-country skiing.

INFORMATION:

Children, accompanied by their parents, are invited to take part in this fun **2 km course**. Everyone participates for the enjoyment of outdoor activity and family time. Parents may accompany their young children free of charge for the Mini.

START TIME:

Sunday, February 15, 2026 – 12:00 p.m. – behind the Relais plein air



POWERED BY



IN ASSOCIATION WITH



SEE YOU NEXT YEAR



FEBRUARY 19, 20 & 21 2027